

School: School of Applied Science, Technology and Law	Level: Bachelor	Invigilator's Sign:
Program: BBA.LLB	Year/Part: I/I	Superintendent's Sign:
Subject: Principles of Management (BMGT106)		Code No.

GROUP A (Multiple-Choice Questions)	[10x1=10]	Time: 20 Minutes
<p>i. This group contains 10 multiple-choice questions (MCQs).</p> <p>ii. Answers must be marked on the MCQ Answer Sheet.</p> <p>iii. You may use the main answer sheet for rough work.</p> <p>iv. Marks will not be awarded for answers with cutting, erasing, overwriting, or multiple shaded options.</p> <p>v. The MCQ question paper must be returned along with the MCQ answer sheet.</p>		Code No.:

- Which of the following is NOT a characteristic of management?
 - Goal-oriented
 - Continuous process
 - Individual activity
 - Dynamic function
- According to Henri Fayol, which principle ensures minimal wastage of resources?
 - Unity of Direction
 - Equity
 - Order
 - Stability of Tenure
- Which theory suggests that management style should vary based on the situation?
 - Scientific Management
 - Bureaucratic Theory
 - Contingency Theory
 - Human Relations Theory
- Which type of business environment includes competitors and customers?
 - Internal Environment
 - Macro Environment
 - Micro Environment
 - Legal Environment
- Which of the following is a key characteristic of Strategic Planning as compared to Tactical or Operational Planning?
 - Focuses on day-to-day task execution
 - Short-term in nature
 - Involves long-term goals and organizational vision
 - Primarily handled by first-line managers
- In a "flat organizational structure," what is a key feature?
 - Many hierarchical levels
 - Narrow span of control
 - Wide span of control
 - Centralized decision-making
- Herzberg's Two-Factor Theory distinguishes between:
 - Hygiene factors and motivators
 - Only monetary incentives
 - Extrinsic and intrinsic rewards as identical
 - Punishment as the best motivator
- Which type of control prevents problems before they occur?
 - Concurrent Control
 - Feedback Control
 - Feedforward Control
 - Bureaucratic Control
- A "strong organizational culture" is characterized by:
 - Weak employee alignment
 - Clearly defined values and norms
 - Frequent conflicts
 - No shared beliefs
- Which leadership style encourages employee participation in decisions?
 - Autocratic
 - Laissez-faire
 - Democratic
 - Transactional

MCQ Answer Sheet

Marks Secured: _____

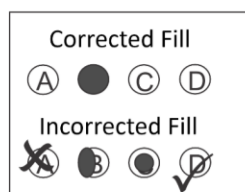
In Words: _____

Examiner's Sign: _____ Date: _____

Scrutinizer's Marks: _____

In Words: _____

Scrutinizer's Sign: _____ Date: _____



1. (A) (B) (C) (D)	6. (A) (B) (C) (D)
2. (A) (B) (C) (D)	7. (A) (B) (C) (D)
3. (A) (B) (C) (D)	8. (A) (B) (C) (D)
4. (A) (B) (C) (D)	9. (A) (B) (C) (D)
5. (A) (B) (C) (D)	10. (A) (B) (C) (D)

Manmohan Technical University
Office of the Controller of Examinations
Exam Year: 2082, Jestha (Model Question)

School: School of Applied Science, Technology and Law	Level: Bachelor	Time: 3 Hours
Program: BBA.LLB	Year/Part: I/I	Full Marks: 60
Subject: Principles of Management (BMGT106)		Pass Marks: 30

- ✓ Candidates are required to give their answers in their own words as far as practicable.
- ✓ The figures in the margin indicate **Full Marks**.
- ✓ Assume suitable data if necessary.

GROUP A (Multiple-Choice Questions are provided on separate sheet)

[10×1=10]

GROUP B (Descriptive Answer Questions - **Attempt ALL Questions**)

[8×4=32]

1. Briefly explain the managerial role as defined by Henry Mintzberg. Give one example for each role.
2. Discuss the key principles of Frederick Taylor's Scientific Management theory. How does this approach differ from the Human Relations theory?
3. What are the four key areas of corporate social responsibility (CSR)? Briefly explain why CSR is important for modern businesses.
4. Explain the steps involved in the rational decision-making process.

OR

- Differentiate between strategic, tactical, and operational planning. Provide one example of each type of planning in a business context.
5. Differentiate between tall and flat organizational structures. What are the advantages of a flat structure in modern businesses?
 6. Describe three leadership styles and suggest which style works best in a creative team environment.
 7. Explain Maslow's Hierarchy of Needs Theory and how managers can apply it to motivate employees.
 8. What is organizational culture? Discuss two ways in which a strong culture benefits a company.

GROUP C (Analytical Answer Questions - **Attempt ALL Questions**)

[2×9=18]

9. Communication barriers often derail organizational goals. Identify five barriers to effective communication and recommend practical solutions for each in a remote work environment.
10. Delegation of authority is essential for organizational efficiency, yet many managers fail to implement it effectively." Explain the features of delegation, common reasons for its failure, and suggest strategies to improve delegation in a hierarchical organization.

OR

Analyze how technological and legal factors in the business environment create both opportunities and challenges for modern organizations.